

Art activate: Flowers inside out



The beautiful flowers of Florida inspired Ponce de Leon to name the area after the "Feast of Flowers" celebration in Spain.



The abundance and variety of flowers in South Florida add color to our yards, gardens, and even foods!

With its subtropical climate, Florida is home to some of the world's most beautiful and colorful flowers.

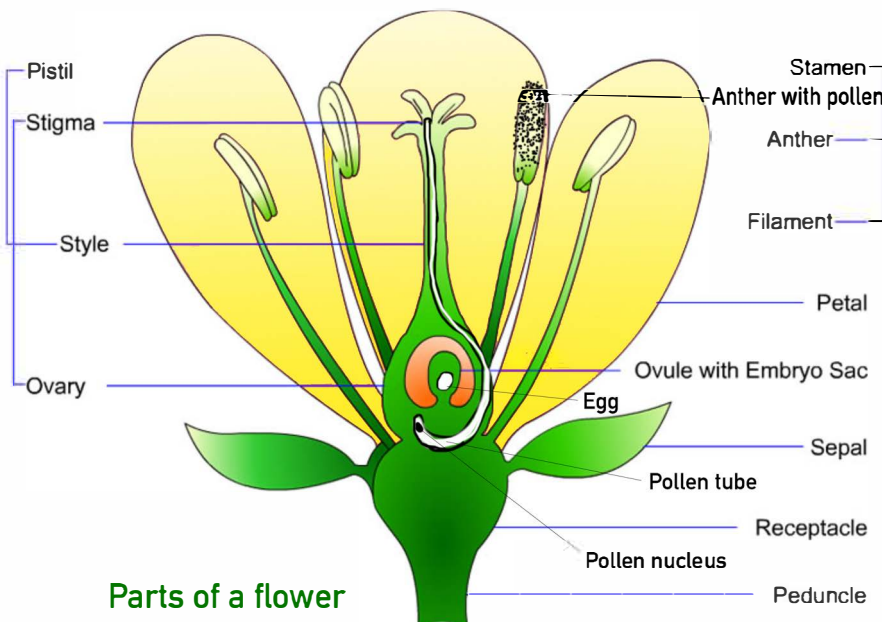


Choose one flower (from the link below or from your garden) and practice careful observation. Draw what you see with attention to details: flower/leaves/stems. Use the whole page. Note the SHAPE, COLOR, and PROPORTIONS of your flower.

LINK:
<https://flawildflowers.org/resources/pdfs/Publications/10EasyWildflowers.pdf>



Include a labeled floral diagram. A labeled floral diagram is a scientific drawing depicting a flower and showing/labeling its major parts.



Parts of a flower



Drawing or Collage:
 Printer or Construction paper
 Colored/graphite pencils
 Ink, watercolor, and brushes
 Fabrics
 Markers
 Crayons
 Glue and scissors
 Recycled materials may be used.

Learn how to protect Florida's roadside wildflowers here:

<https://flawildflowers.org/protect/>



Family: ASTERACEAE
 Species: Silphium compositum Michx.
 Common Name: KIDNEYLEAF ROSINWEED

For questions, e-mail: lili@coralgablesmuseum.org