

# Film activate: Working together

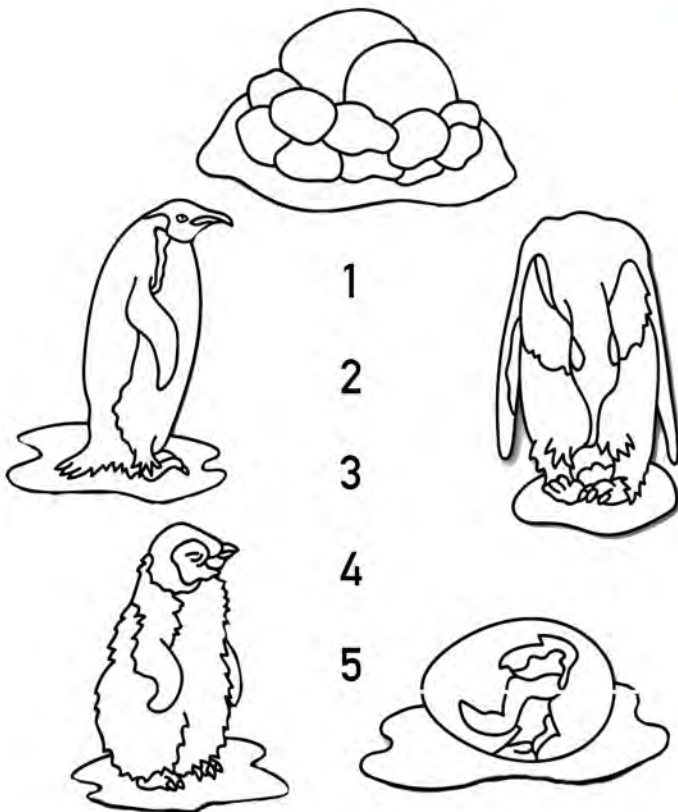


## MARCH OF THE PENGUINS

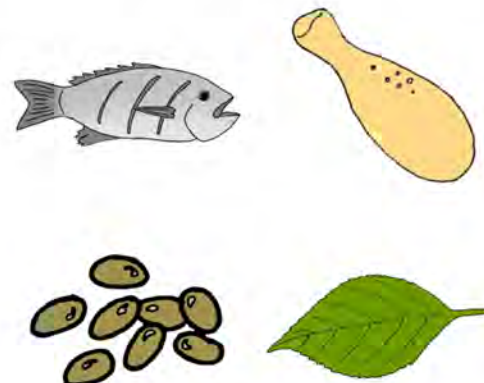


**1** The survival of the emperor penguin colony depends upon the social interactions among the group. The penguins march together from the sea to their breeding ground on the pack ice and back to the sea. The penguins huddle together against the cold. They allow each penguin to spend some time in the warmer interior of the group. They also use their numbers to confuse predators such as the sea lion. **Can you complete the life cycle of the emperor penguin by matching the numbers to the order of the stages?**

**2** Where do emperor penguins like to live?

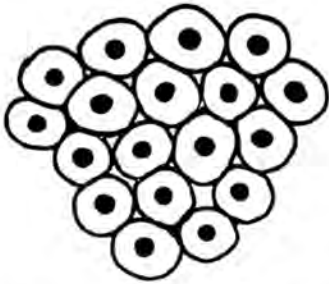


**3** What do emperor penguins like to eat?



4 Can you identify what is in each picture? Color each card

1. Is this a penguin egg?



yes



no

2. Is this a chick that has just hatched?

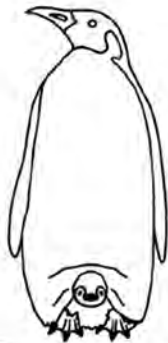


yes



no

3. Is this a chick in the brood pouch?



yes



no

4. Is this an adult penguin?



yes



no